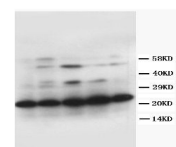
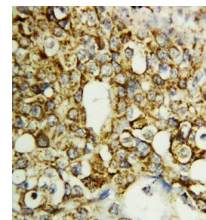


Product Datasheet

TFPI2 Antibody orb18153

| | |
|----------------------------|---|
| Description | TFPI2 Antibody |
| Species/Host | Rabbit |
| Reactivity | Human |
| Conjugation | Unconjugated |
| Sensitivity | > 5000 cells |
| Tested Applications | IHC, WB |
| Immunogen | A synthetic peptide corresponding to a sequence in the middle region of human TFPI2 (170-186aa NVTRYFNPRTYRTCDAF). |
| Form/Appearance | Lyophilized |
| Concentration | Adding 0.2 ml of distilled water will yield a concentration of 500 µg/ml. |
| Storage | Store at -20°C for one year from date of receipt. After reconstitution, at 4°C for one month. It can also be aliquotted and stored frozen at -20°C for six months. Avoid repeated freeze-thaw cycles. |
| Note | For research use only. |
| Isotype | Rabbit IgG |
| Clonality | Polyclonal |
| MW | 26934 MW |
| Uniprot ID | P48307 |
| Dilution Range | Immunohistochemistry (Paraffin-embedded Section), 0.5-1 µg/ml, Human, By HeatWestern blot, 0.1-0.5 µg/ml, Human |
| Expiration Date | 12 months from date of receipt. |
| Application Notes | Tested Species: In-house tested species with positive results. Predicted Species: Species predicted to be fit for the product based on sequence similarities. By Heat: Boiling the paraffin sections in 10mM citrate buffer, pH6.0, for 20mins is required for the staining of formalin/paraffin sections. Other applications have not been tested. Optimal dilutions should be determined by end users. . Add 0.2ml of distilled water will yield a concentration of 500µg/ml. |



Lane 1 : MM453 Whole Cell Lysate
Lane 2 : MM231 Whole Cell Lysate
Lane 3 : HeLa Whole Cell Lysate
Lane 4 : HT1080 Whole Cell Lysate
Lane 5 : Jurkat Whole Cell Lysate

Western Blot analysis of
cell
tissue lysate using CD133
antibody