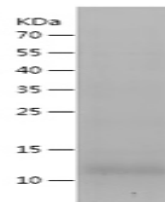


Product Datasheet

Human LY6E Protein orb1098604-1

Description	Recombinant Human LY6E Protein
Reactivity	Human
Tested Applications	ELISA, WB
Form/Appearance	Lyophilized from a 0.2 µm filtered solution in 10 mM Hepes, 500 mM NaC with 5% trehalose, pH7.4
Preservatives	Lyophilized from a 0.2 µm filtered solution in 10 mM Hepes, 500 mM NaCl with 5% trehalose, pH 7.4
Storage	-20°C for 12 months as lyophilized. 2-8°C for 1 month under sterile conditions after reconstitution. Avoid repeated freeze-thaw cycles.
Tag	N-terminal His Tag
Note	For research use only.
Purity	Greater than 95% as determined by SDS-PAGE
MW	10.3 kDa
Source	E.Coli
Uniprot ID	Q16553
Expiration Date	6 months from date of receipt.
Application Notes	Centrifuge the vial at 10,000 rpm for 1 minute, reconstitute at 200 µg/ml in sterile distilled water by gentle pipetting 2-3 times, don't vortex



SDS-PAGE analysis of
Human
LY6E protein