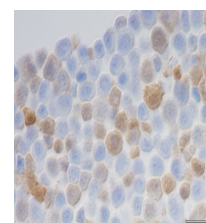
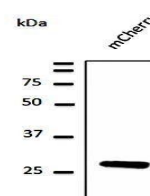


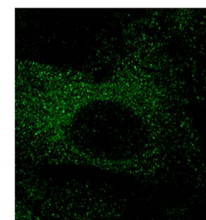
Product Datasheet

mCherry antibody orb11618

| | |
|----------------------------|--|
| Description | Goat polyclonal antibody to mCherry (Cherry fluorescent protein). |
| Species/Host | Goat |
| Reactivity | Other |
| Conjugation | Unconjugated |
| Tested Applications | IF, IHC-Fr, IHC-P, WB, IEM |
| Immunogen | Purified recombinant peptide produced in E. coli. |
| Target | mCherry |
| Form/Appearance | Polyclonal antibody supplied as a 200 or 500 µl (3 mg/ml) aliquot in PBS, 20% glycerol and 0.05% sodium azide. This antibody is epitope-affinity purified from goat antiserum. |
| Concentration | 1 mg/ml |
| Preservatives | PBS, 20% glycerol and 0.05% sodium azide |
| Storage | Store at -20°C for long-term storage. Store at 2-8°C for up to one month. |
| Note | For research use only. |
| Isotype | IgG |
| Clonality | Polyclonal |
| Dilution Range | WB:1:500-1:5,000, IF:1:50-1:500, IHC-P:1:50-1:500, IHC-F:1:50-1:500, IEM:1:50-1:500 |
| Expiration Date | 12 months from date of receipt. |
| Application Notes | The antibody solution should be gently mixed before use. |



Immunohistochemical analysis of mouse mammary tumor cell line using mCherry goat antibody



Confocal immunofluorescence analysis of COS-7 transfected with mCherry-EEA1 using mCherry antibody