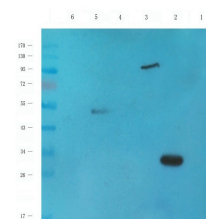
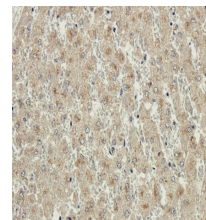


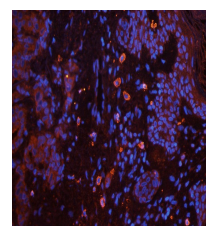
Product Datasheet

CD95 antibody orb385613

Description	Rabbit polyclonal antibody to CD95
Species/Host	Rabbit
Reactivity	Human, Mouse, Porcine, Rat
Conjugation	Unconjugated
Tested Applications	ICC, IF, IHC-P, WB
Immunogen	KLH conjugated synthetic peptide derived from human CD95. Please contact us for the exact immunogen sequence. The peptide is available as orb13192 .
Target	CD95
Form/Appearance	10 mM PBS, 0.02% sodium azide
Concentration	- 100 µg (in 200 µl): 0.5 mg/ml - 200 µg (in 400 µl): 0.5 mg/ml
Storage	Store at 4°C for up to two weeks. For long term storage, aliquot and store at -20°C, avoid freeze/thaw cycles.
Note	For research use only.
Isotype	IgG
Clonality	Polyclonal
Purity	Polyclonal antibodies are purified by peptide affinity chromatography
MW	38 kDa
Dilution Range	IHC-P: 1:50-300, WB: 1:200-2000, IF/ICC: 1:50-300
Expiration Date	12 months from date of receipt.



Western blot analysis of mouse colon (lane 1), mouse liver (lane 2), mouse pancreas (lane 3), rat ovary (lane 4), human breast cancer (lane 5); hela cells (lane 6) tissue using anti-CD95 (1 µg/mL)



IF analysis of human breast cancer tissue using CD95 antibody (2.5 µg/ml)