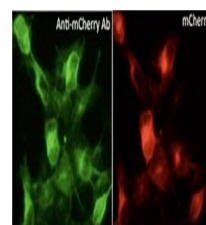
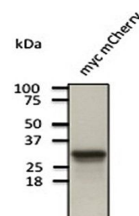


Product Datasheet

mCherry antibody orb153320

Description	Goat polyclonal antibody to mCherry (Cherry fluorescent protein). mCherry protein is derived from DsRed, an engineered red fluorescent protein from so-called disc corals of the genus <i>Discosoma</i> .
Species/Host	Goat
Reactivity	Other
Conjugation	Unconjugated
Tested Applications	IF, IHC-Fr, IHC-P, WB, IEM
Immunogen	Purified recombinant peptide produced in <i>E. coli</i> .
Target	mCherry
Form/Appearance	Polyclonal antibody supplied as a 200 or 500 µl (3 mg/ml) aliquot in PBS, 20% glycerol and 0.05% sodium azide. This antibody is epitope-affinity purified from goat antiserum.
Concentration	3 mg/ml
Preservatives	PBS, 20% glycerol and 0.05% sodium azide
Storage	Store at -20°C for long-term storage. Store at 2-8°C for up to one month.
Note	For research use only.
Isotype	IgG
Clonality	Polyclonal
Dilution Range	WB:1:500-1:5,000, IF:1:50-1:500, IHC-P:1:50-1:500, IHC-F:1:50-1:500, IEM:1:50-1:500
Expiration Date	12 months from date of receipt.
Application Notes	The antibody solution should be gently mixed before use.



Confocal immunofluorescence analysis of HEK293 cells using mCherry antibody.