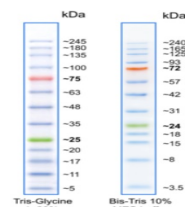


Product Datasheet

BlueElf Prestained Protein Marker orb533732

| | |
|----------------------------|--|
| Description | The BlueElf Prestained Protein Marker is a three-color protein standard with 13 pre-stained purified proteins. Proteins are covalently coupled with blue chromophore except for two reference bands, one green at 25 kDa and one red one at 75 kDa respectively, when separated on SDS-PAGE (Tris-glycine buffer). |
| Tested Applications | SDS-PAGE |
| Hazard Information | Non-Toxic |
| Target | BlueElf Prestained Protein Marker |
| Form/Appearance | liquid (Supplied in 20 mM Tris-phosphate pH 7.5 , 2 % SDS, 0.2 DTT, 3.6 M urea and 15 % glycerol). |
| Storage | Store at -20°C |
| Note | For research use only. |
| Purity | > 95 % (SDS-PAGE) |
| MW | 5-245 kDa |
| Expiration Date | 12 months from date of receipt. |



SDS-Page analysis of
BlueElf
Prestained Protein Marker.