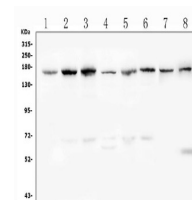


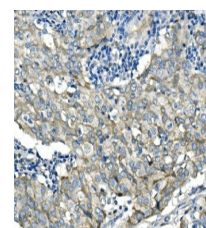
Product Datasheet

Desmoglein 2/DSG2 Antibody orb610895

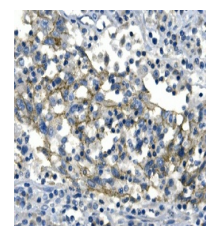
Description	Desmoglein 2/DSG2 Antibody
Species/Host	Rabbit
Reactivity	Human, Mouse, Rat
Predicted Reactivity	Hamster
Conjugation	Unconjugated
Tested Applications	FC, ICC, IF, IHC, WB
Immunogen	A synthetic peptide corresponding to a sequence at the C-terminus of human Desmoglein 2 (1104-1118aa STRVTKHSTVQHSYS), different from the related mouse and rat sequences by one amino acid.
Form/Appearance	Lyophilized
Concentration	Adding 0.2 ml of distilled water will yield a concentration of 500 µg/ml.
Storage	Store at -20°C for one year from date of receipt. After reconstitution, at 4°C for one month. It can also be aliquotted and stored frozen at -20°C for six months. Avoid repeated freeze-thaw cycles.
Note	For research use only.
Isotype	Rabbit IgG
Clonality	Polyclonal
MW	122294 MW
Uniprot ID	Q14126
Dilution Range	Western blot, 0.1-0.5 µg/ml, Human, Mouse, Rat Immunohistochemistry (Paraffin-embedded Section), 0.5-1 µg/ml, Human, Rat, By Heat Immunocytochemistry/Immunofluorescence, 2 µg/ml, Human Flow Cytometry, 1-3 µg/1x10 ⁶ cells, Human
Expiration Date	12 months from date of receipt.
Application Notes	Tested Species: In-house tested species with positive results. Predicted Species: Species predicted to be fit for the product based on sequence similarities. By Heat: Boiling the paraffin sections in 10mM citrate buffer, pH6.0, for 20mins is required for the staining of formalin/paraffin sections. Other applications have not been tested. Optimal dilutions should be determined by end users. . Add 0.2ml of distilled water will yield a concentration of 500ug/ml.



WB analysis using anti-Desmoglein 2 antibody. Lane 1:K562 cell, Lane 2:HeLa cell, Lane 3:HepG2 cell, Lane 4:A549 cell, Lane 5:Caco-2 cell, Lane 6:SW620 cell, Lane 7:rat liver tissue, Lane 8:mouse liver tissue,



IHC analysis of DSG2 using anti-DSG2 antibody.



IHC analysis of DSG2 using anti-DSG2 antibody.