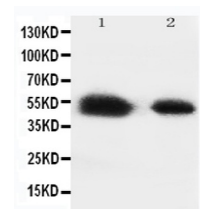


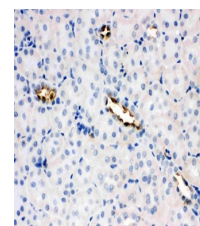
Product Datasheet

Glucose Transporter 8/SLC2A8 Antibody orb610897

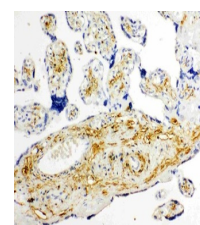
Description	Glucose Transporter 8/SLC2A8 Antibody
Species/Host	Rabbit
Reactivity	Human, Mouse, Rat
Predicted Reactivity	Hamster
Conjugation	Unconjugated
Tested Applications	IHC, WB
Immunogen	A synthetic peptide corresponding to a sequence at the C-terminus of mouse Glucose Transporter 8 (461-477aa ETKGRTLEQVTAHFEGR), different from the related rat sequence by one amino acid, and from the related human sequence by two amino acids.
Form/Appearance	Lyophilized
Concentration	Adding 0.2 ml of distilled water will yield a concentration of 500 µg/ml.
Storage	Store at -20°C for one year from date of receipt. After reconstitution, at 4°C for one month. It can also be aliquotted and stored frozen at -20°C for six months. Avoid repeated freeze-thaw cycles.
Note	For research use only.
Isotype	Rabbit IgG
Clonality	Polyclonal
MW	51508 MW
Uniprot ID	Q9JIF3
Dilution Range	Immunohistochemistry (Paraffin-embedded Section), 0.5-1 µg/ml, Human, Rat, Mouse, By HeatWestern blot, 0.1-0.5 µg/ml, Human, Rat, Mouse
Expiration Date	12 months from date of receipt.
Application Notes	Tested Species: In-house tested species with positive results. Predicted Species: Species predicted to be fit for the product based on sequence similarities. By Heat: Boiling the paraffin sections in 10mM citrate buffer, pH6.0, for 20mins is required for the staining of formalin/paraffin sections. Other applications have not been tested. Optimal dilutions should be determined by end users. . Add 0.2ml of distilled water will yield a concentration of 500ug/ml.



Anti-Glucose Transporter 8 antibody, PA2165, Western blotting, Lane 1:Rat Testis Tissue Lysate, Lane 2:Placenta Tissue Lysate



Anti-Glucose Transporter 8 antibody,IHC(P):Rat Kidney Tissue



Anti-Glucose Transporter 8 antibody,IHC(P):Human Placenta Tissue