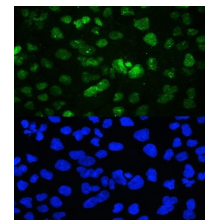


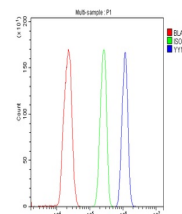
Product Datasheet

YY1 Antibody orb610910

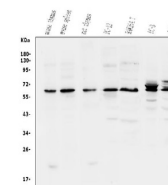
Description	YY1 Antibody
Species/Host	Rabbit
Reactivity	Human, Mouse, Rat
Predicted Reactivity	Bovine
Conjugation	Unconjugated
Sensitivity	> 5000 cells
Tested Applications	FC, ICC, IF, WB
Immunogen	A synthetic peptide corresponding to a sequence in the middle region of human YY1 (206-241aa EQKQVQIKTLEGEFSVTMWSSDEKKDIDHETVVEEQ), identical to the related mouse sequence.
Form/Appearance	Lyophilized
Concentration	Adding 0.2 ml of distilled water will yield a concentration of 500 µg/ml.
Storage	At -20°C for one year from date of receipt. After reconstitution, at 4°C for one month. It can also be aliquotted and stored frozen at -20°C for six months. Avoid repeated freezing and thawing.
Note	For research use only.
Isotype	Rabbit IgG
Clonality	Polyclonal
MW	44713 MW
Uniprot ID	P25490
Dilution Range	Western blot, 0.1-0.5 µg/ml, Human, Mouse, Rat Immunocytochemistry/Immunofluorescence, 2 µg/ml, Human Flow Cytometry, 1-3 µg/1x10 ⁶ cells, Human
Expiration Date	12 months from date of receipt.
Application Notes	Tested Species: In-house tested species with positive results. Other applications have been tested. Optimal dilutions should be determined by end users. Add 0.2ml of distilled water will yield a concentration of 500 µg/ml.



IF analysis of YY1 using anti-YY1 antibody.



Flow Cytometry analysis of THP-1 cells using anti-YY1 antibody (Blue line). Isotype control antibody (Green line) was rabbit IgG. Unlabelled sample (Red line) was also used as a control.



WB analysis using anti-YY1 antibody. Lane 1: mouse thymus tissue, Lane 2: mouse spleen tissue, Lane 3: rat thymus tissue, Lane 4: rat PC-12 cell, Lane 5: mouse RAW264.7 cell, Lane 6: PC-3 cell, Lane 7: SW620 cell.