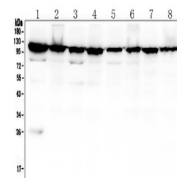


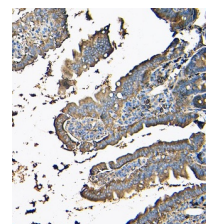
## Product Datasheet

### MVP Antibody (monoclonal, 8B12) orb610911

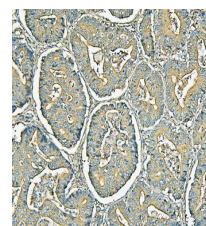
<b>Description</b>	MVP Antibody (monoclonal, 8B12)
<b>Species/Host</b>	Mouse
<b>Reactivity</b>	Human, Mouse, Rat
<b>Conjugation</b>	Unconjugated
<b>Tested Applications</b>	FC, ICC, IF, IHC, WB
<b>Immunogen</b>	E.coli-derived human MVP recombinant protein (Position: A2-H259).
<b>Form/Appearance</b>	Lyophilized
<b>Storage</b>	Store at -20°C for one year from date of receipt. After reconstitution, at 4°C for one month. It can also be aliquotted and stored frozen at -20°C for six months. Avoid repeated freeze-thaw cycles.
<b>Note</b>	For research use only.
<b>Isotype</b>	Mouse IgG2a
<b>Clonality</b>	Monoclonal
<b>MW</b>	100-110 kDa
<b>Clone ID</b>	8B12
<b>Uniprot ID</b>	<a href="#">Q14764</a>
<b>Dilution Range</b>	Western blot, 0.1-0.5 µg/ml, Human, Mouse, Rat Immunohistochemistry (Paraffin-embedded Section), 0.5-1 µg/ml, Human, Mouse, Rat, By Heat Immunocytochemistry/Immunofluorescence, 5 µg/ml, Human Flow Cytometry, 1-3 µg/1x10 <sup>6</sup> cells, Human
<b>Expiration Date</b>	12 months from date of receipt.
<b>Application Notes</b>	Add 0.2ml of distilled water will yield a concentration of 500 µg/ml.



WB analysis using anti-MVP antibody. Lane 1: A549 tissue, Lane 2: U2OS cell, Lane 3: HepG2 cell, Lane 4: THP-1 cell, Lane 5: HeLa cell, Lane 6: SW620 cell, Lane 7: rat RH35 cell, Lane 8: mouse RAW246.7 cell.



IHC analysis of MVP using anti-MVP antibody.



IHC analysis of MVP using anti-MVP antibody.