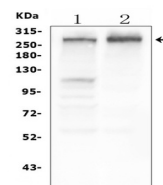


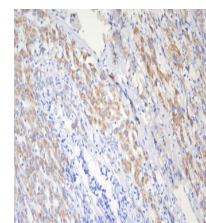
## Product Datasheet

### Tuberin TSC2 Antibody (monoclonal, 6I3) orb610916

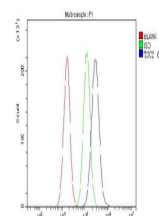
<b>Description</b>	Tuberin TSC2 Antibody (monoclonal, 6I3)
<b>Species/Host</b>	Mouse
<b>Reactivity</b>	Human
<b>Conjugation</b>	Unconjugated
<b>Sensitivity</b>	> 5000 cells
<b>Tested Applications</b>	FC, IHC, WB
<b>Immunogen</b>	E.coli-derived human Tuberin recombinant protein (Position: H1611-V1807). Human Tuberin shares 94% and 90% amino acid (aa) sequence identity with mouse and rat Tuberin, respectively.
<b>Form/Appearance</b>	Lyophilized
<b>Storage</b>	Store at -20°C for one year from date of receipt. After reconstitution, at 4°C for one month. It can also be aliquotted and stored frozen at -20°C for six months. Avoid repeated freeze-thaw cycles.
<b>Note</b>	For research use only.
<b>Isotype</b>	Mouse IgG2b
<b>Clonality</b>	Monoclonal
<b>MW</b>	280 kDa
<b>Clone ID</b>	6I3
<b>Uniprot ID</b>	<a href="#">P49815</a>
<b>Dilution Range</b>	Western blot, 0.1-0.5 µg/ml, Human Immunohistochemistry (Paraffin-embedded Section), 0.5-1 µg/ml, Human, By Heat Flow Cytometry, 1-3 µg/1x10 <sup>6</sup> cells, Human
<b>Expiration Date</b>	12 months from date of receipt.
<b>Application Notes</b>	Add 0.2ml of distilled water will yield a concentration of 500 µg/ml.



WB analysis using anti-TSC2 antibody. Lane 1: HEK293 tissue, Lane 2: PC-3 cell



IHC analysis of TSC2 using anti-TSC2 antibody.



Flow Cytometry analysis of A549 cells using anti-TSC2 antibody (Blue line). Isotype control antibody (Green line) was mouse IgG. Unlabelled sample (Red line) was also used as a control.