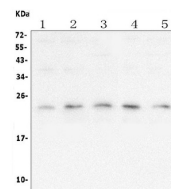


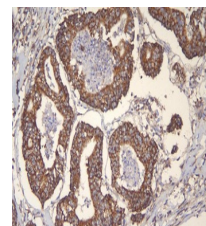
## Product Datasheet

### mtTFA TFAM Antibody (monoclonal, 4D9) orb610917

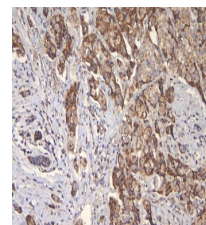
<b>Description</b>	mtTFA TFAM Antibody (monoclonal, 4D9)
<b>Species/Host</b>	Mouse
<b>Reactivity</b>	Human
<b>Conjugation</b>	Unconjugated
<b>Tested Applications</b>	FC, IHC, WB
<b>Immunogen</b>	A synthetic peptide corresponding to a sequence at the N-terminus of human mtTFA (214-241aa EMKSWEEQMIEVGRKDLLRRTIKKQRKY), different from the related mouse and rat sequences by five amino acids.
<b>Form/Appearance</b>	Lyophilized
<b>Storage</b>	Store at -20°C for one year from date of receipt. After reconstitution, at 4°C for one month. It can also be aliquotted and stored frozen at -20°C for six months. Avoid repeated freeze-thaw cycles.
<b>Note</b>	For research use only.
<b>Isotype</b>	Mouse IgG2b
<b>Clonality</b>	Monoclonal
<b>MW</b>	40 kDa
<b>Clone ID</b>	4D9
<b>Uniprot ID</b>	<a href="#">Q00059</a>
<b>Dilution Range</b>	Western blot, 1-2 µg/ml, Human Immunohistochemistry (Paraffin-embedded Section), 0.5-1 µg/ml, Human, By Heat Flow Cytometry, 1-3 µg/1x10 <sup>6</sup> cells Human
<b>Expiration Date</b>	12 months from date of receipt.
<b>Application Notes</b>	Add 0.2ml of distilled water will yield a concentration of 500 µg/ml.



WB analysis using anti ZO-1 antibody. Lane 1: HEK293 tissue, Lane 2: K562 cell, Lane 3: Caco-2 cell, Lane 4: Raji cell, Lane 5: A549 cell,



IHC analysis of TFAM using anti-TFAM antibody.



IHC analysis of TFAM using anti-TFAM antibody.