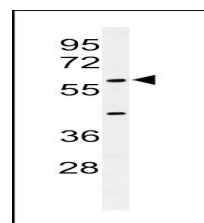
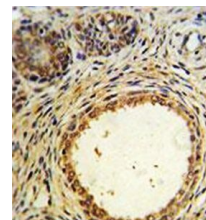


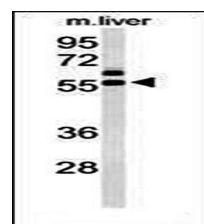
## Product Datasheet

### AMH antibody orb40644

<b>Description</b>	Rabbit polyclonal antibody to AMH which is also known as MIS whose expression can be detected in the tonsils but it is majorly expressive in the tonsillar CD4 regulatory T-cell and saliva. It is found in the extracellular space. It can perform functions like Mullerian duct regression and can inhibit the phosphorylation of the EGF receptor in vitro. It is able to inhibit the growth of tumors derived from tissues of Mullerian duct origin.
<b>Species/Host</b>	Rabbit
<b>Reactivity</b>	Human, Mouse
<b>Conjugation</b>	Unconjugated
<b>Tested Applications</b>	FC, IHC-P, WB
<b>Immunogen</b>	Synthetic Peptide
<b>Target</b>	AMH
<b>Form/Appearance</b>	Purified polyclonal antibody supplied in PBS with 0.09% (W/V) sodium azide. This antibody is purified through a protein A column, followed by peptide affinity purification.
<b>Note</b>	For research use only.
<b>Isotype</b>	Rabbit IgG
<b>Clonality</b>	Polyclonal
<b>MW</b>	59195
<b>Clone ID</b>	RB22167
<b>Uniprot ID</b>	<b>P03971</b>
<b>NCBI</b>	<b>268, NP_000470.2</b>
<b>Dilution Range</b>	WB: 1:2000, IHC-P: 1:25, FACS: 1:25
<b>Expiration Date</b>	12 months from date of receipt.



WB analysis of using AMH antibody



Western blot analysis of AMH antibody in mouse liver tissue lysate