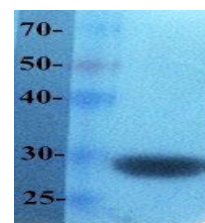
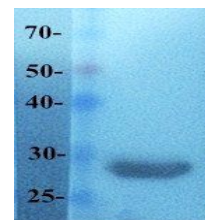


Product Datasheet

mCherry antibody orb181783

Description	Rabbit polyclonal antibody to mCherry.
Species/Host	Rabbit
Conjugation	Unconjugated
Tested Applications	ELISA, WB
Immunogen	Recombinant mcherry protein (orb178365) was used as immunogen.
Target	mCherry
Form/Appearance	10 mM PBS, 0.02% sodium azide
Concentration	- 100 µg (in 200 µl): 0.5 mg/ml - 200 µg (in 400 µl): 0.5 mg/ml
Note	For research use only.
Isotype	IgG
Clonality	Polyclonal
Purity	Polyclonal antibodies are purified by peptide affinity chromatography
MW	27 kDa
Dilution Range	WB: 500-2000
Expiration Date	12 months from date of receipt.



WB analysis of recombinant mcherry antibody (dilution of primary antibody- 1:500)